

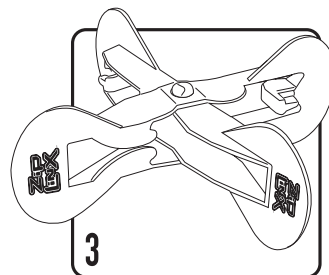
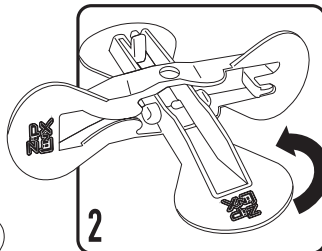
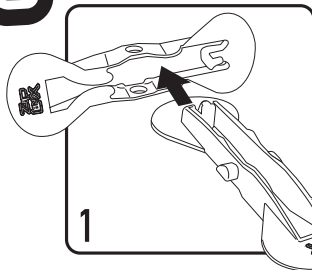


HIGH-FLYING CHAIN-REACTION FUN!

SCAN THE QR CODE
TO SEE VIDEO
INSTRUCTIONS!

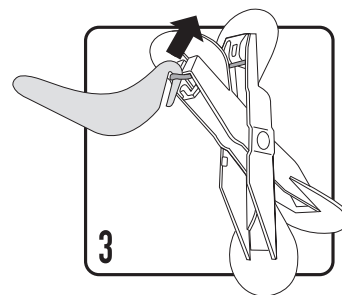
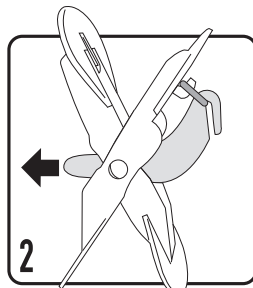
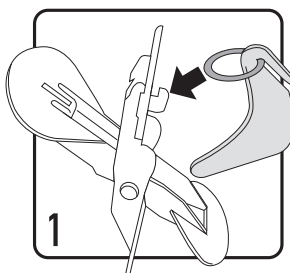


1 ZIPLINX ASSEMBLY

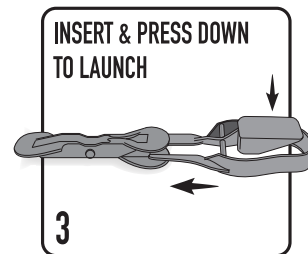
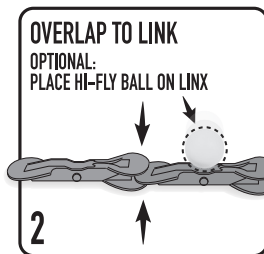
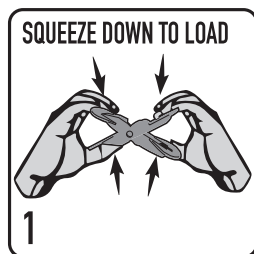


2 ATTACH POWER BAND BEFORE USE

NOTE: BANDS ARE SHIPPED
UNATTACHED TO KEEP ZIPLINX FROM
BEING DAMAGED DURING SHIPMENT



3 LOADING ZIPLINX

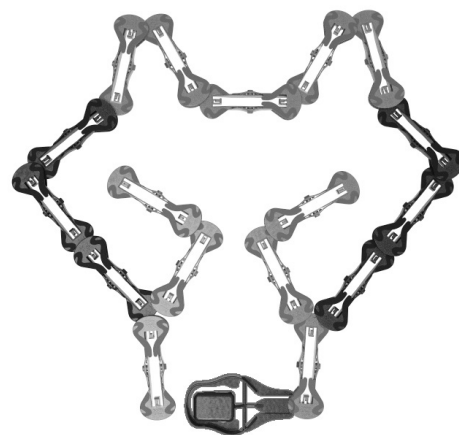


HERE ARE TWO
DESIGNS TO GET
YOU STARTED!

PLEASE NOTE: ALWAYS CHECK YOUR ZIPLINX BEFORE USE. CHECK FOR
LOOSE PARTS OR SIGNS OF WEAR AND TEAR. DO NOT USE IF DAMAGED.
ONLY USE POWER BANDS PROVIDED AND ATTACH ONLY ONE PER LINX.

USE YOUR BEST JUDGEMENT WHEN PLAYING WITH ZIPLINX. USE ON A
SMOOTH, FLAT, LEVEL TABLETOP FREE OF OBSTACLES. WHEN LAUNCHING
ZIPLINX, NOTHING SHOULD BE DIRECTLY ABOVE THEM.

TO KEEP ZIPLINX FROM LAUNCHING BEFORE COMPLETING YOUR DESIGN,
WAIT UNTIL YOU ARE DONE BEFORE INSERTING THE LAUNCHER KEY.



FIND MORE IDEAS AT WWW.ZIPLINX.COM

Distributed by John Adams Leisure Ltd. John Adams Leisure Ltd. is constantly endeavouring to improve quality standards and therefore colours, sizes and contents may sometimes vary from those shown. Packaging and leaflets printed on recycled paper wherever possible. John Adams Leisure Ltd., PE28 4YA, England. EU authorised representative: John Adams Leisure EU Ltd., D06 H685, Ireland.

For customer services call 01480 414361 or email customerservices@johnadams.co.uk

Please retain this information for reference. MADE IN CHINA.

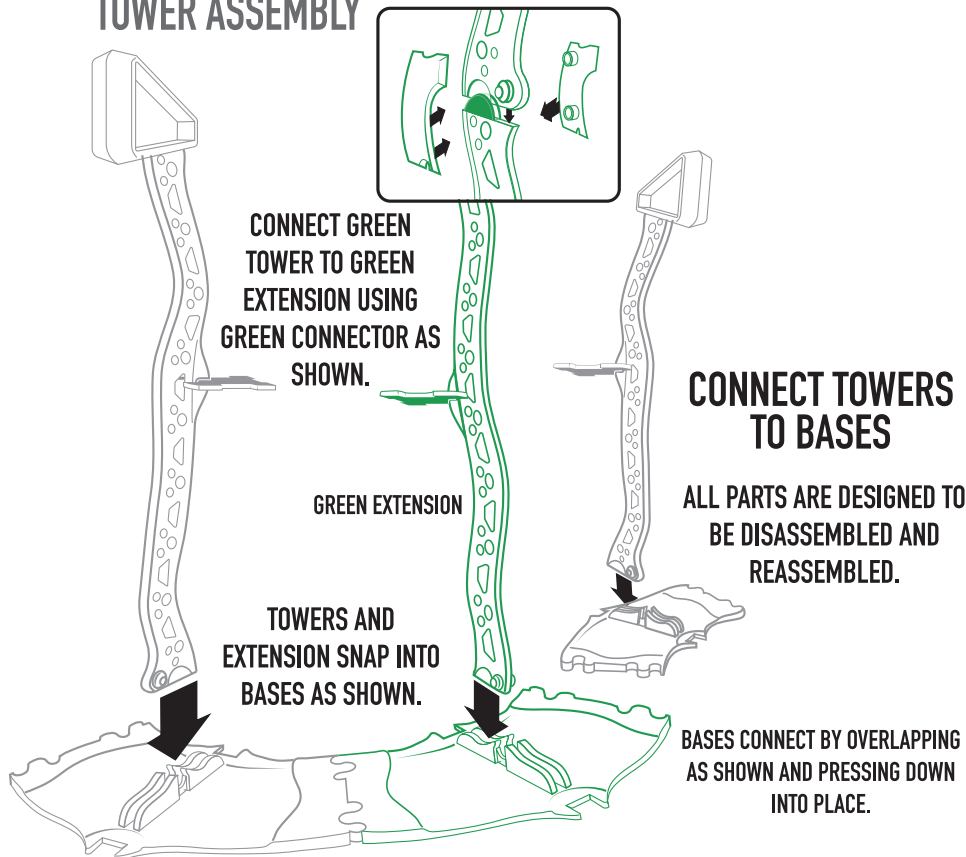
To see more of our range visit www.johnadams.co.uk

Z030UK-01

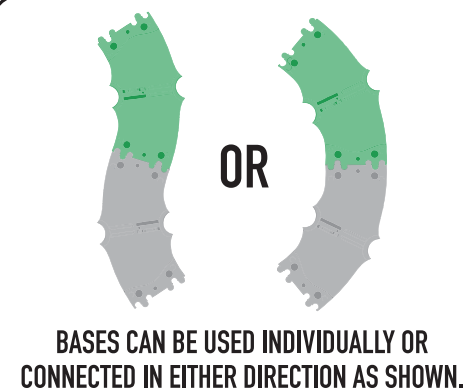
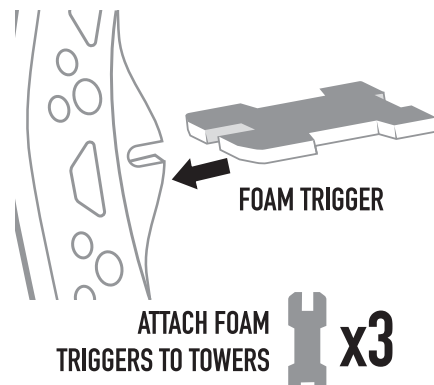
ZIPLINX.com

4 TOWER CONSTRUCTION

TOWER ASSEMBLY



NOTE: BLUE FOAM TRIGGER ATTACHES TO BLUE TOWER.
GREEN TRIGGER ATTACHES TO GREEN TOWER EXTENSION.

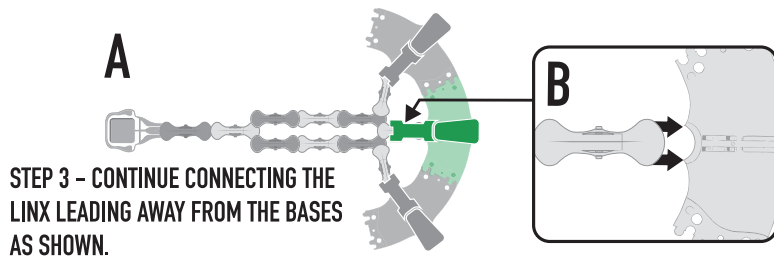


5 SETTING UP CHAIN-REACTION DISPLAYS

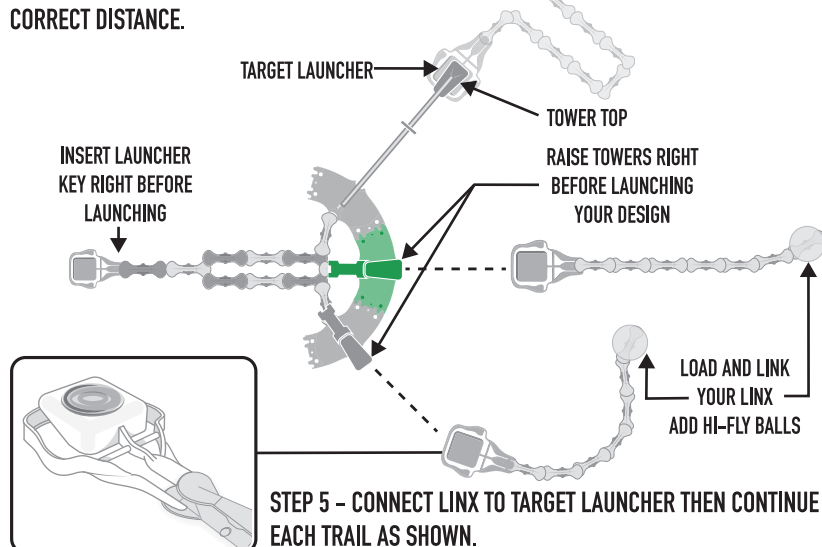
EXAMPLE 1 - BASES CONNECTED

STEP 1 - CONNECT BASES AS SHOWN IN A.

STEP 2 - INSERT CLOSED END OF A LOADED LINX INTO THE SLOT OF EACH BASE AS SHOWN IN B.

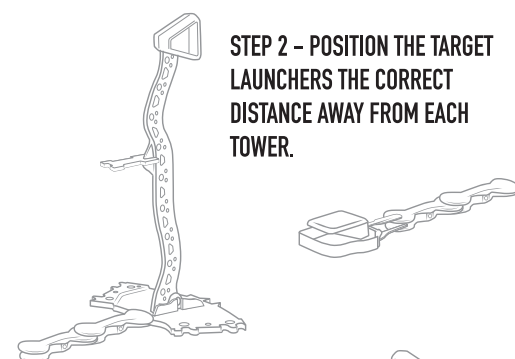


STEP 4 - PLACE TARGET LAUNCHER UNDER TOWER TOP WHEN IN DOWN POSITION TO SET THE CORRECT DISTANCE.

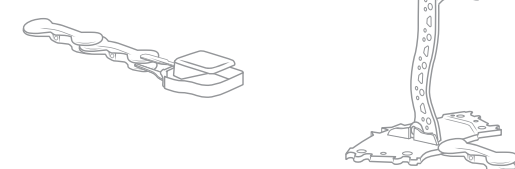


EXAMPLE 2 - BASES SEPARATED

STEP 1 - ARRANGE TOWERS IN A LAYOUT LIKE THAT SHOWN.



STEP 3 - INSERT CLOSED END OF A LOADED LINX INTO THE SLOT OF EACH BASE.



ONCE LAYOUT IS COMPLETED, ADJUST POSITIONING OF PARTS AS NEEDED TO BE PROPERLY LINED-UP.