

John Adams®

5+
YEARS

GEMEX

MAGICALLY SETS FROM GEL TO GEMS!

INSTRUCTIONS

WARNING! Not suitable for children under 36 months. Choking hazard – contains small parts.

USE ONLY AS DIRECTED.

NON-FOOD PRODUCT. NOT FOR HUMAN CONSUMPTION.

TOY ONLY. USE UNDER CONSTANT ADULT SUPERVISION.

DO NOT APPLY GEL TO THE SKIN. WASH SKIN WITH SOAP AND WATER TO REMOVE ANY INCIDENTAL CONTAMINATION.

Distributed under license from Hunter Products. ©2021 John Adams Leisure Ltd.

John Adams Leisure Ltd., Hercules House, Pierson Road, Enterprise Campus, Alconbury Weald, Huntingdon, Cambridgeshire, PE28 4YA, England.

EU authorised representative: John Adams Leisure EU Ltd., 1 Castlewood Avenue, Rathmines, Dublin 6, D06 H685, Ireland.

For customer services call 01480 414361 or email customerservices@johnadams.co.uk

Please retain this information for reference. MADE IN CHINA.

To see more of our range visit www.johnadams.co.uk





MAGICALLY SETS FROM GEL TO GEMS!

5+
YEARS

GEMEX NAIL ART SET INSTRUCTIONS

IMPORTANT! PLEASE READ & UNDERSTAND THESE INSTRUCTIONS & WARNINGS BEFORE SETUP & USE OF THIS PRODUCT. USE OF THIS PRODUCT BY CHILDREN SHOULD BE SUPERVISED BY AN ADULT AT ALL TIMES.

1. ONLY USE GEMEX INDOORS TOGETHER WITH PLAYSET IN A WELL VENTILATED AREA.
2. KEEP GEMEX GEL STORED AT ROOM TEMPERATURE AND USE WITHIN 12 MONTHS OF OPENING. DISPOSE OF ALL GEL BOTTLES WHEN THEY ARE EMPTY AND ALWAYS CLOSE THE LID TIGHTLY OF THE BOTTLE OR THE LIQUID MAY DRY OUT.
3. IF GEMS ARE STILL STICKY AFTER THREE MINUTES, PLEASE CHANGE THE BATTERIES.
4. DO NOT INGEST GEMEX GEL. IF INGESTED, RINSE MOUTH WITH WATER.
5. AVOID CONTACT WITH EYES. IN CASE OF CONTACT WITH EYES, RINSE IMMEDIATELY WITH PLENTY OF WATER AND SEEK MEDICAL ADVICE.
6. AVOID CONTACT WITH SKIN. IF GEMEX DOES MAKE CONTACT WITH SKIN, WASH OFF WITH SOAP AND PLENTY OF WATER.
7. DISCONTINUE USE IF RASH, REDNESS OR ITCHING OCCURS. CONSULT YOUR PHYSICIAN IF IRRITATION PERSISTS.
8. ALWAYS WASH HANDS THOROUGHLY WITH SOAP AND WATER AFTER USE. IF SOAP AND WATER ISN'T REMOVING THE MAGIC GEL ON YOUR HAND/FINGERS, TRY AN OIL BASED CLEANSER OR CREAM.
9. KEEP GEL AWAY FROM FABRIC OR CLOTHING AS IT MAY STAIN THESE AREAS.
10. UV LIGHT IS HAZARDOUS TO THE EYES, IF PROLONGED EXPOSURE OCCURS.
11. AVOID LOOKING DIRECTLY INTO THE LIGHT OR POINTING THE LIGHT TOWARDS OTHERS. UV LIGHT IS HAZARDOUS TO THE EYES.
12. WAIT A MINIMUM OF 30 SECONDS BEFORE REMOVING GEMS FROM MOLD AS THEY CAN BE HOT.

SWITCH OFF TORCH WHEN NOT IN USE.
REQUIRES x3 AAA BATTERIES (NOT INCLUDED)
USE ONLY AS DIRECTED

SAFETY INSTRUCTIONS

*AMOUNT OF GEMS LIQUID CREATES WILL VARY BASED ON SIZE OF INDIVIDUAL MOLD SHAPE. LARGER MOLD SHAPES WILL USE MORE OF THE LIQUID, MAKING LESS GEMS IN TOTAL.
25 GRAMS OF LIQUID MAGIC MAKES UP TO 50 SMALL GEMS.
AVERAGE WEIGHT .5 GRAMS

CAUTION:

1. Batteries should only be inserted or changed by an adult.
2. Rechargeable batteries are to be removed from the toy before being charged.
3. Non-rechargeable batteries are not to be recharged.
4. Rechargeable batteries are only to be charged under adult supervision.
5. Do not mix different types of batteries e.g. alkaline, standard (carbon-zinc) or rechargeable (nickel-cadmium) batteries.
6. Never mix old batteries with new batteries (replace all batteries at the same time).
7. Only batteries of the same or equivalent type as recommended are to be used.
8. Be sure to insert batteries with the correct polarity and always follow the toy and battery manufacturers' instructions.
9. Always remove old or exhausted batteries from the product.
10. Remove batteries from product before extended storage.
11. The supply terminals are not to be short circuited.
12. Check that the contact surfaces are clean and bright before installing batteries.
13. Do not attempt to power battery products from the mains power supply.
14. Dispose of used batteries at a recycling point. Never dispose of batteries in fire.
15. Examine devices and make sure the battery compartment is correctly secured.



Disposal of old electrical equipment. This symbol on the product or its packaging indicates that this product should not be treated as household waste. Instead it should be handed over to local Civic Office, your household waste disposal service or the place you purchased this item from.

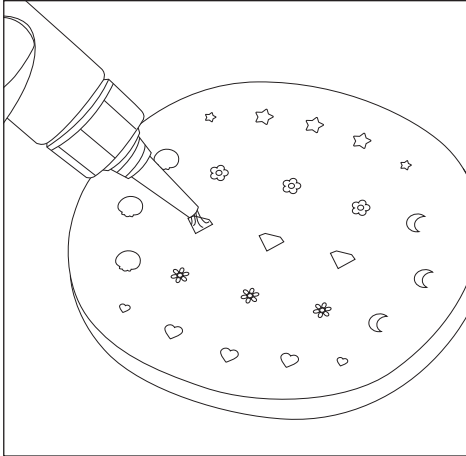


MAGICALLY SETS FROM GEL TO GEMS!

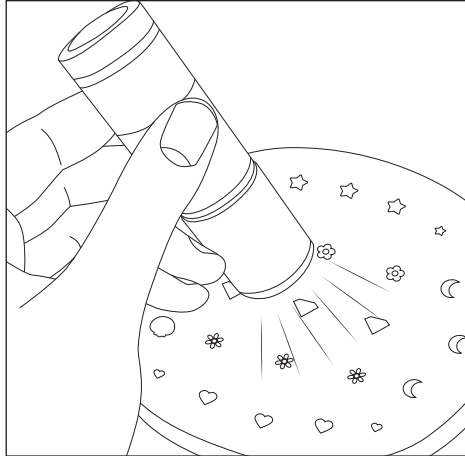
INSTRUCTIONS

5+
YEARS

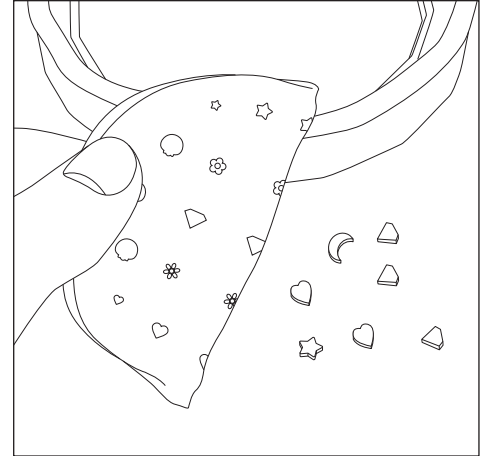
USING THE NAIL ART MOLD



1. Place the mold onto a flat clean surface. Squeeze the Gemex Gel in to the mold. Warning! Fill up the mold to the rim to avoid sharp edges occurring.



2. Shine the torch for 3 minutes to harden the gel.
*if still sticky to touch, shine light for longer until gel is hardened.



3. Pop out hardened decorations from the mold.

HELPFUL HINTS,

1. If gems are still sticky after curing for 3 minutes, please change the batteries in the Magic Torch and repeat curing step.
2. Always make sure your decorations are covered with the Liquid Magic before curing.
Use your tool to push the decorations down, allowing them to sink deeper in to the liquid magic.
3. Do not overfill the molds.
4. Ensure to work on a flat surface so each mold is filled evenly and level.

DO NOT APPLY LIQUID GEL TO SKIN. IF GEL DOES MAKE CONTACT WITH SKIN, AVOID SUNLIGHT, WASH OFF WITH SOAP AND PLENTY OF WATER.

USE ONLY AS DIRECTED

GEMEX GEL HEATS UP WITH UV LIGHT. Do not put hands on mold that is being hardened by Magic Torch Light. Allow a minimum of 30 seconds to cool after curing before handling.

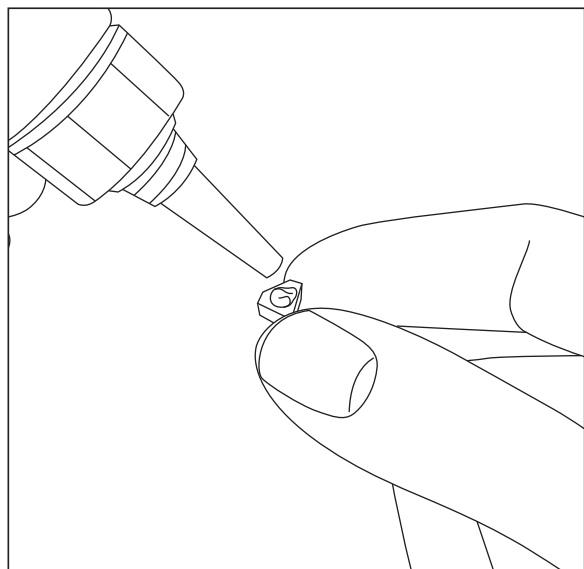


MAGICALLY SETS FROM GEL TO GEMS!

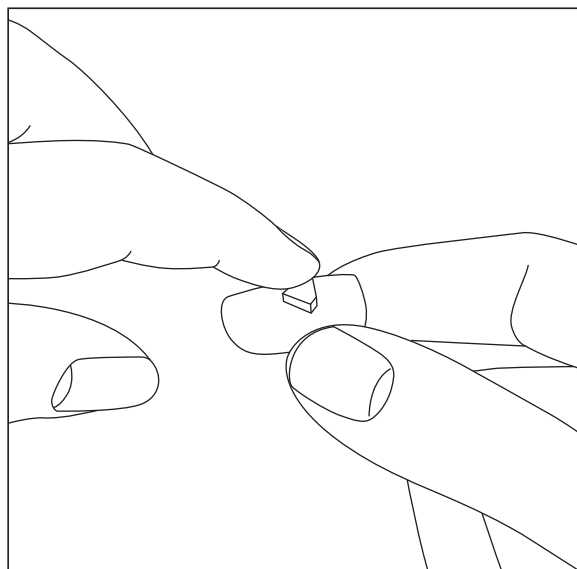
INSTRUCTIONS

5+
YEARS

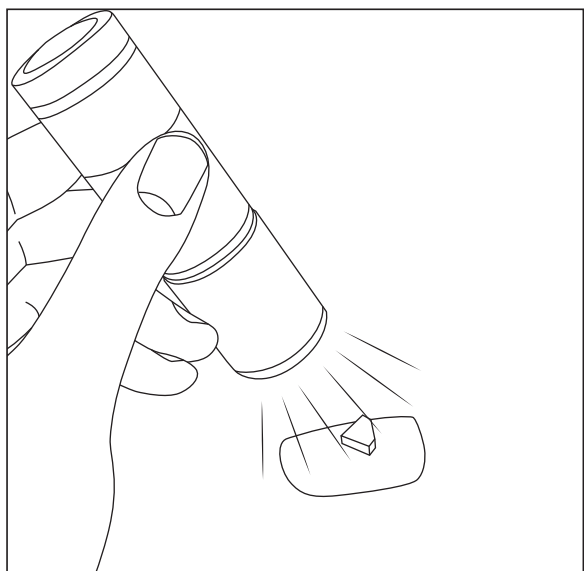
HOW TO ATTACH NAIL ART TO NAILS



1. Carefully place a small dot of the gel onto the nail decoration.



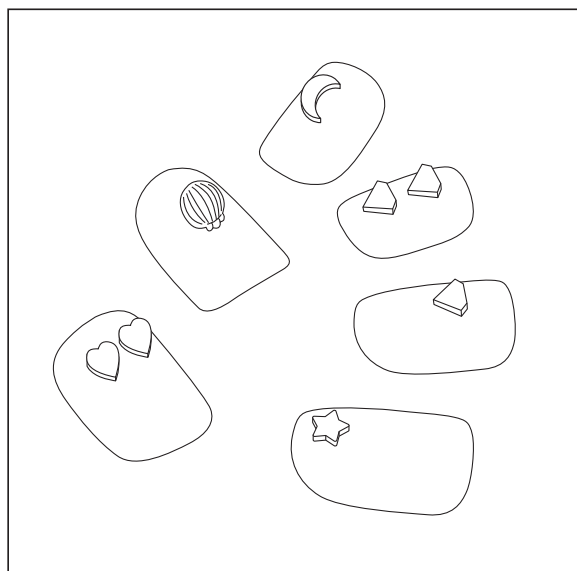
2. Gently press the decoration onto the chosen false nail.



3. Shine the torch for 3 minutes to harden the gel.

*if still not cured enough, shine light for longer until gel is hardened.

*place on flat surface for this step



4. Continue adding decorations until you are happy with the look of your nails.

DO NOT APPLY LIQUID GEL TO SKIN. IF GEL DOES MAKE CONTACT WITH SKIN, AVOID SUNLIGHT, WASH OFF WITH SOAP AND PLENTY OF WATER.

USE ONLY AS DIRECTED

GEMEX GEL HEATS UP WITH UV LIGHT. Do not put hands on mold that is being hardened by Magic Torch Light. Allow a minimum of 30 seconds to cool after curing before handling.

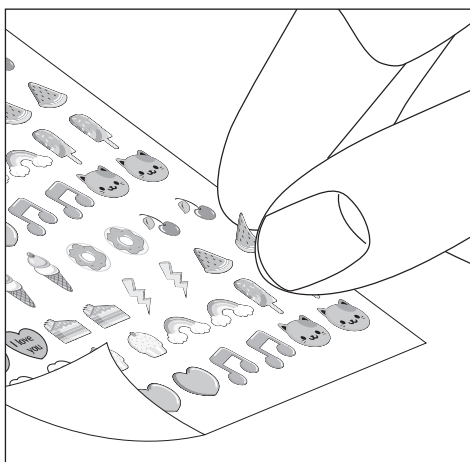


MAGICALLY SETS FROM GEL TO GEMS!

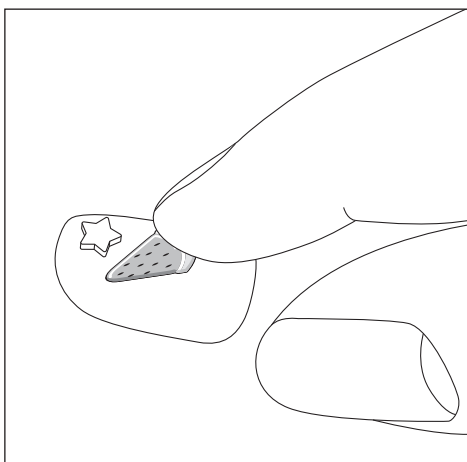
INSTRUCTIONS

5+
YEARS

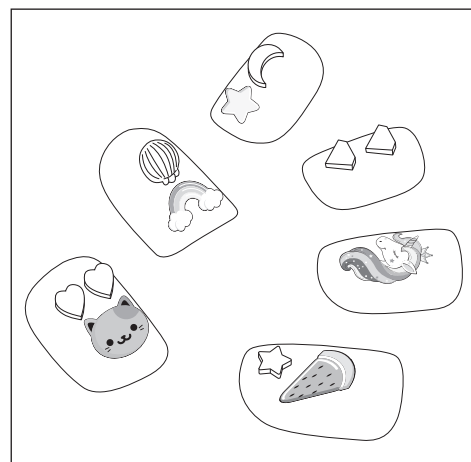
ATTACH STICKERS TO NAILS



1. Carefully peel the small sticker from the nail sticker sheet.

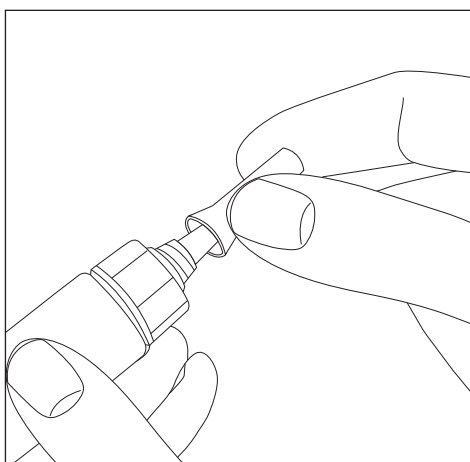


2. Gently place onto your chosen nail.

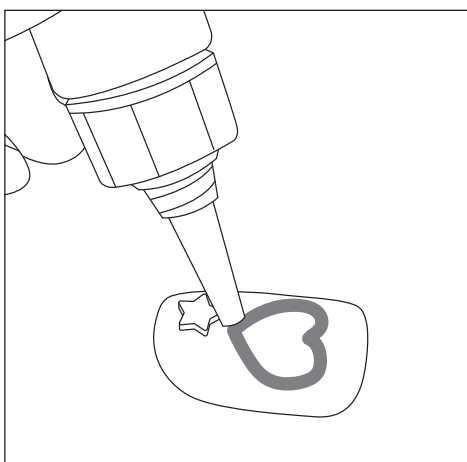


3. Continue adding stickers until you are happy with the look of your nails.

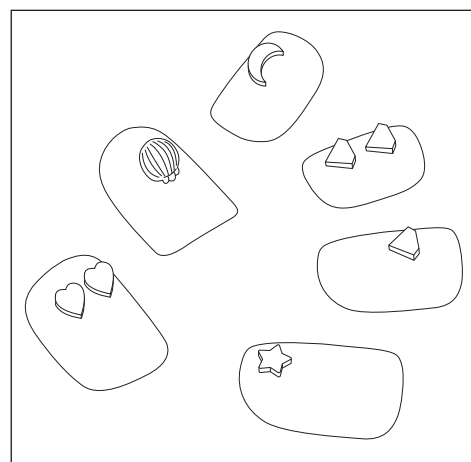
USING THE NAIL ART PEN



1. Remove the lid from the nail art pen.



2. Gently squeeze the bottle to get the gel to come out. Begin to draw on your beautiful designs.



3. Add as many decorations as you like until you're happy with the result.



WARNING

DO NOT APPLY LIQUID GEL TO SKIN. IF GEL DOES MAKE CONTACT WITH SKIN, AVOID SUNLIGHT, WASH OFF WITH SOAP AND PLENTY OF WATER.

USE ONLY AS DIRECTED

Use of this product by children should be supervised by an adult.
Do not ingest.

Inhalation of this product can cause adverse health effects. The product must be used in a well ventilated area.

Keep away from eyes. If material accidentally enters the eye, rinse well with plenty of clean water. Seek medical attention if irritation persists.

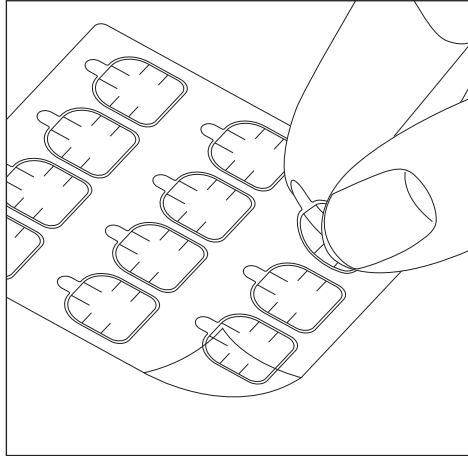


MAGICALLY SETS FROM GEL TO GEMS!

INSTRUCTIONS

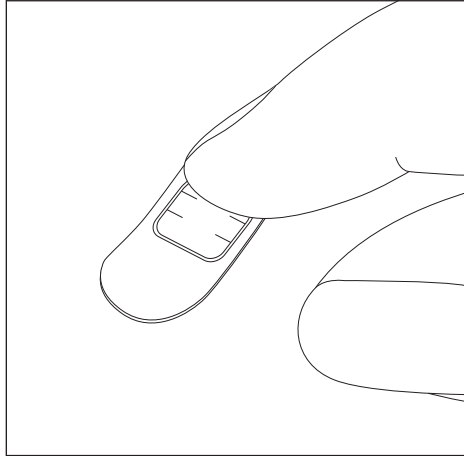
5+
YEARS

USING/ATTACHING NAIL ADHESIVE

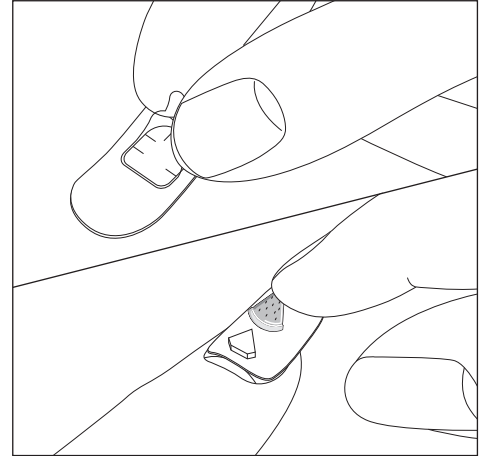


1. Carefully peel off the nail adhesive from the transparent sheet.

*first remove the top transparent layer covering the adhesives.



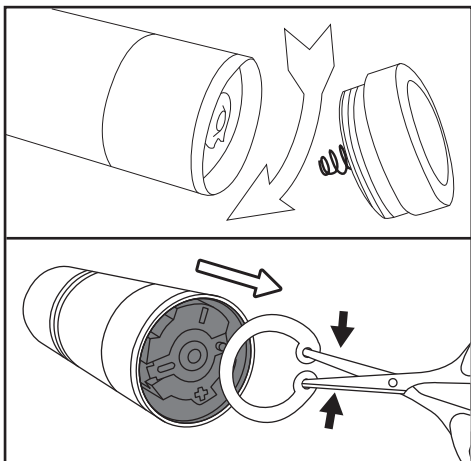
2. With the selected adhesive, press onto the inside of the nail. Ensure its all attached prior to removing the top layer.



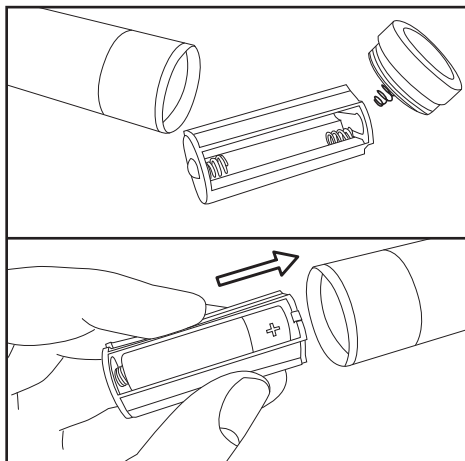
3. Remove the top layer and press on your selected nail. Apply pressure to ensure nail is attached.

Repeat with all nails.

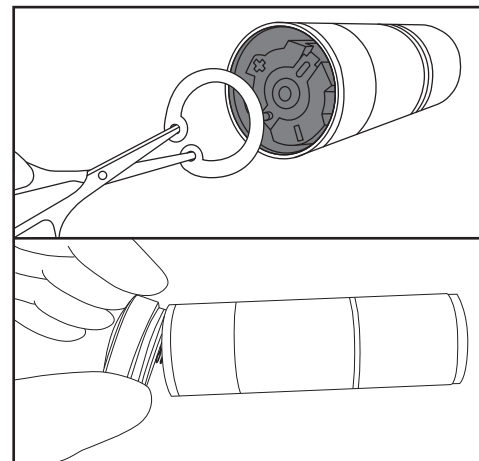
REPLACING BATTERIES IN THE MAGIC LIGHT



1. Unscrew the battery cover/switch on top end of light. Remove the safety ring clip with a tool such as scissors or tweezers.



2. Battery compartment will slide out. Insert or replace x3 AAA 1.5V batteries. Follow the + and - alignment guide for correct alignment.



3. Re-insert the batteries, replace the safety ring clip and screw in the battery cover/switch on top end of light. Press top switch to make sure its operational.

SWITCH OFF TORCH WHEN NOT IN USE.
REQUIRES x3 AAA BATTERIES (NOT INCLUDED)

USE ONLY AS DIRECTED

GEMEX GEL HEATS UP WITH UV LIGHT. Do not put hands on mold that is being hardened by Magic Torch Light. Allow a minimum of 30 seconds to cool after curing before handling.