

John Adams®

6+

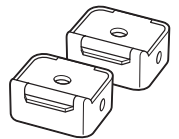
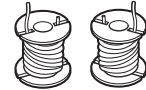
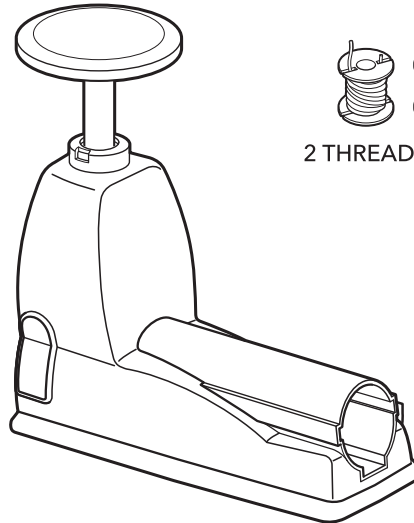
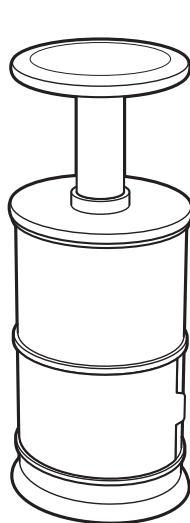
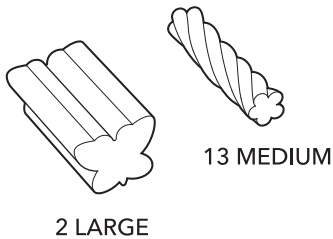
CUTIE STIX™

Continuous Cuts, Countless Designs!

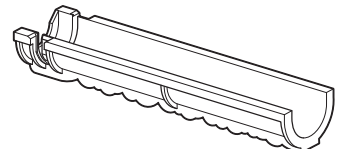
CREATION SET

CONTENTS:

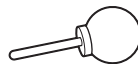
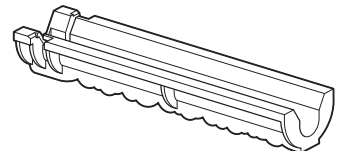
15 STIX - 2 SIZES:



2 CUTTING MOULDS FOR LARGE STIX



FOR MEDIUM STIX



MORE CUTIE STIX PRODUCTS AVAILABLE FROM JOHN ADAMS



READ ENCLOSED INSTRUCTIONS BEFORE OPENING OR USING THIS PRODUCT.

SAFETY

WARNING! Not suitable for children under 36 months. Choking hazard - contains small parts. Strangulation hazard - long cords. Adult supervision required.

CAUTION! Toy contains inaccessible sharp edges. Never attempt to insert finger into the Coring Unit. Never disassemble the Cutting Unit and Coring Unit. Never open the door of the Coring Unit during coring process. Do not attempt or rebuild the machine if any functional issue found. Please remove all packaging material before giving to children.

Do not insert Cutie Stix into nose or ears. If a substantial number of Cutie Stix are swallowed, or Cutie Stix are inserted into nose or ears, seek immediate medical attention. Bring some Cutie Stix and the Instructions Sheet with you. Non- food product. Not for human consumption. Toy Only. Use under constant Adult Supervision. Keep young children and animals away from the activity areas there are small parts which could be swallowed.

© Lansay SAS © 2020 John Adams Leisure Ltd.

John Adams Leisure Ltd. is constantly endeavouring to improve quality standards and therefore colours, sizes and contents may sometimes vary from those shown. Packaging and leaflets printed on recycled paper wherever possible.

John Adams Leisure Ltd., Hercules House, Pierson Road, Enterprise Campus, Alconbury Weald, Huntingdon, Cambridgeshire. PE28 4YA, England.

EU authorised representative: John Adams Leisure EU Ltd., 1 Castlewood Avenue, Rathmines, Dublin 6, D06 H685, Ireland.

For customer services call 01480 414361 or email customerservices@johnadams.co.uk

Please retain this information for reference. MADE IN CHINA. PATENT PENDING

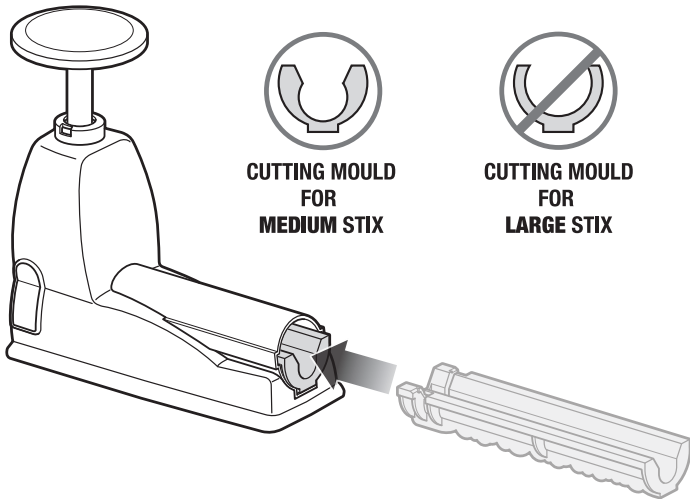
To see more of our range visit **www.johnadams.co.uk**



10976_01_CUTIESTIX_CREATIVE_INS_PRT01 150920

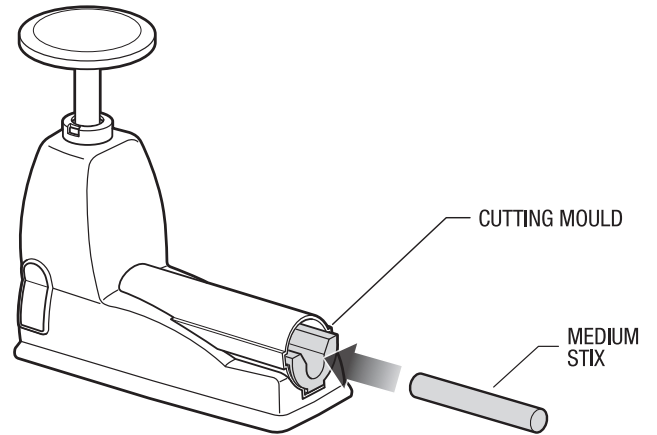
CUTTING MEDIUM STIX FOR MAKING BRACELETS AND NECKLACES

1



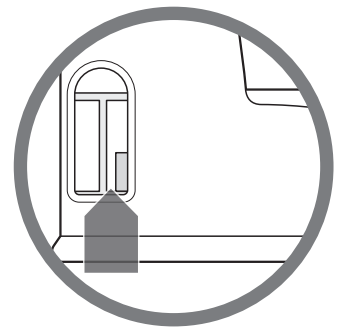
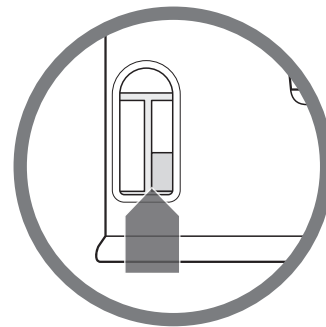
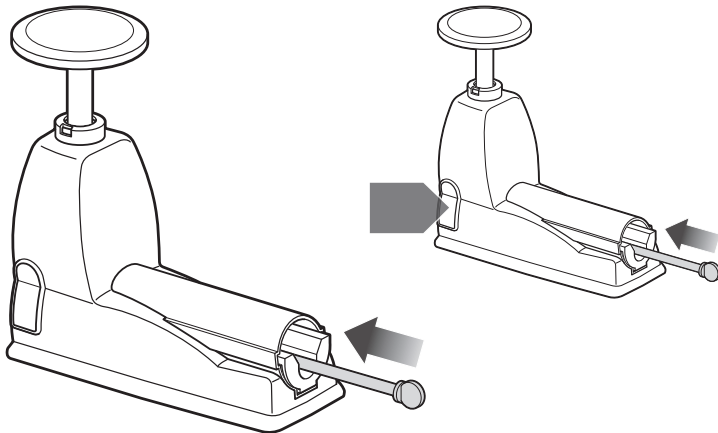
Insert the MEDIUM size cutting mould.

2



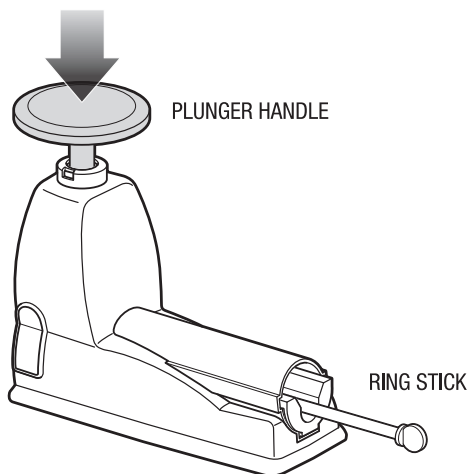
Choose a MEDIUM STIX and push into the cutting mould.

3



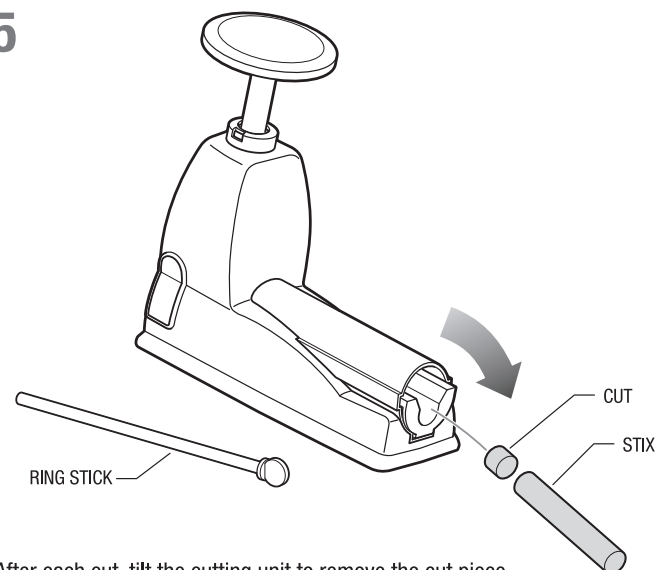
ATTENTION : STIX must be inserted into the cutting unit using the RING STICK. Always make sure to push the STIX right to the end to obtain a perfect cut.

4



Press down firmly on the handle to cut the STIX.

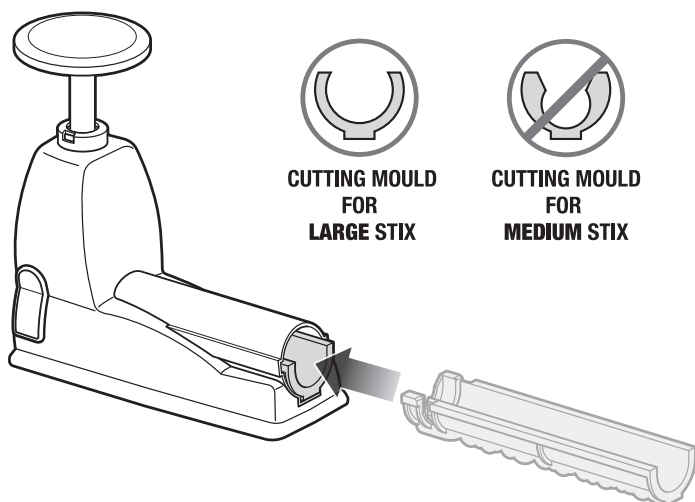
5



After each cut, tilt the cutting unit to remove the cut piece.

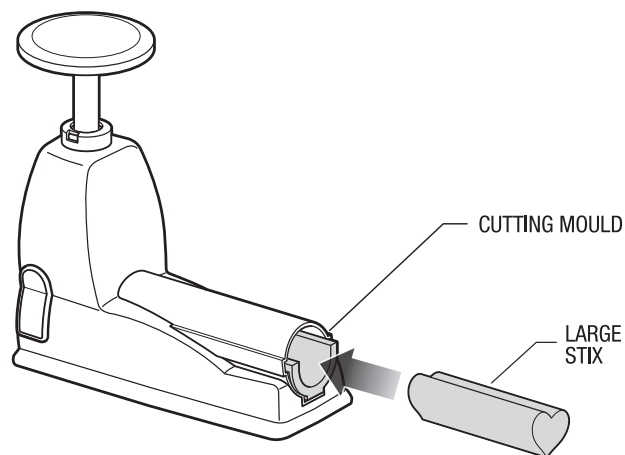
CUTTING LARGE STIX FOR MAKING BRACELETS AND NECKLACES

1



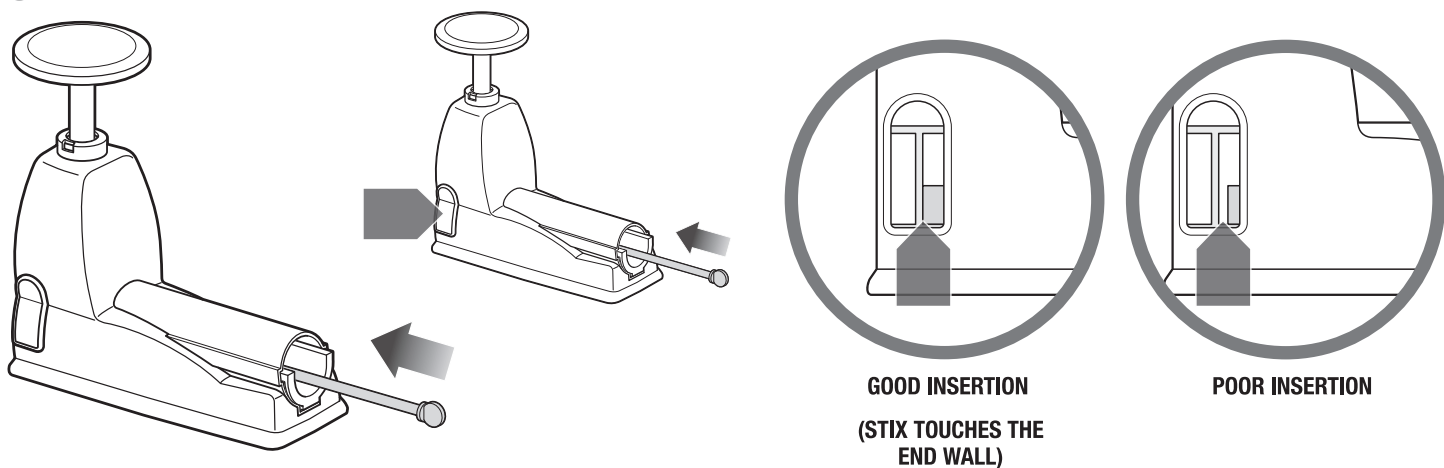
Insert the LARGE size cutting mould.

2



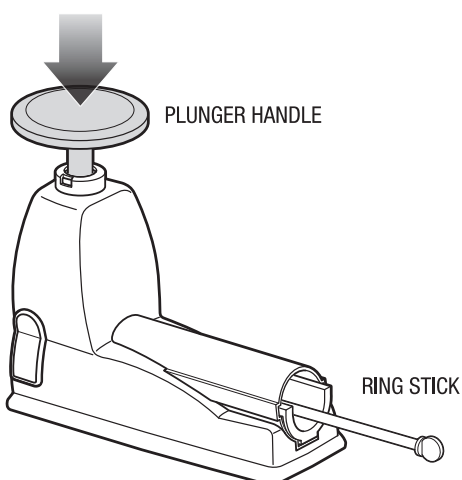
Choose a LARGE STIX and push into the cutting mould.

3



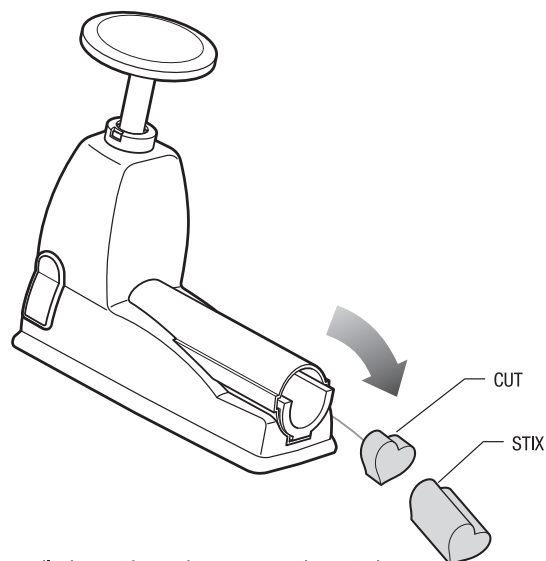
ATTENTION : STIX must be inserted into the cutting unit using the RING STICK. Always make sure to push the STIX right to the end to obtain a perfect cut.

4



Press down firmly on the handle to cut the STIX.

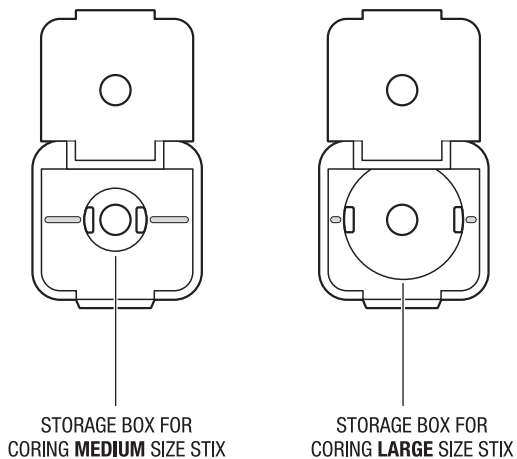
5



After each cut, tilt the cutting unit to remove the cut piece.

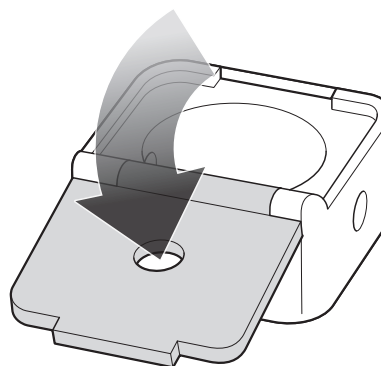
CORING MEDIUM AND LARGE STIX FOR MAKING BRACELETS AND NECKLACES

1



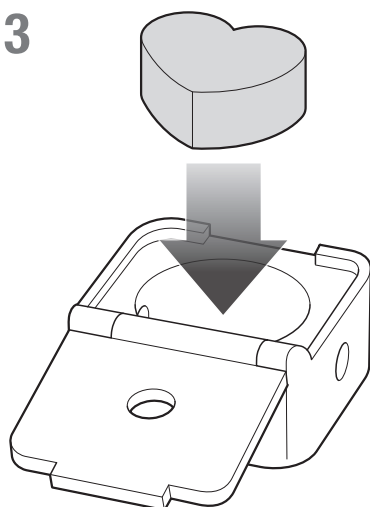
Select the appropriate box for either a medium or a large cut STIX.

2



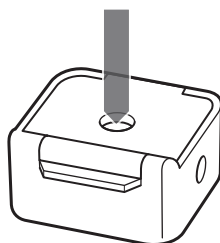
Open the storage box cover.

3

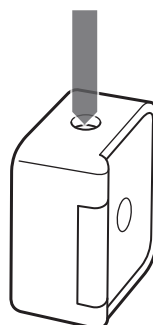


Insert a MEDIUM or LARGE CUT STIX (example shown here is a LARGE).

BOX DIRECTION

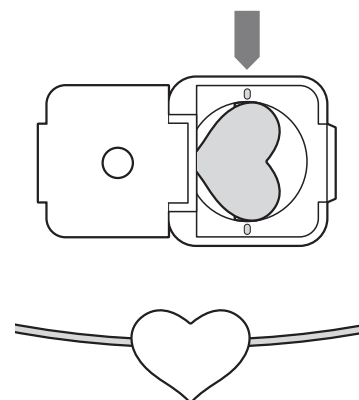


HORIZONTAL HOLE



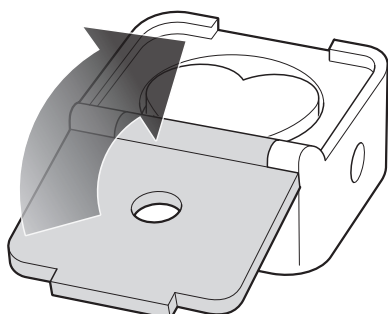
VERTICAL HOLE

EXAMPLE



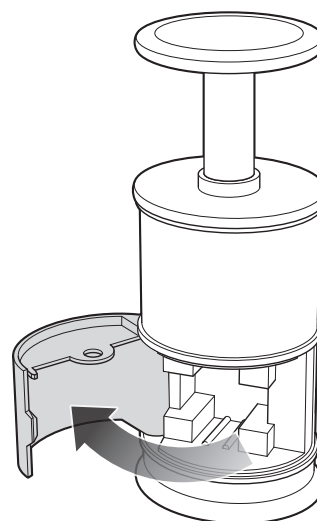
The orientation is vertical so the coring unit will give a horizontally positioned hole.

4



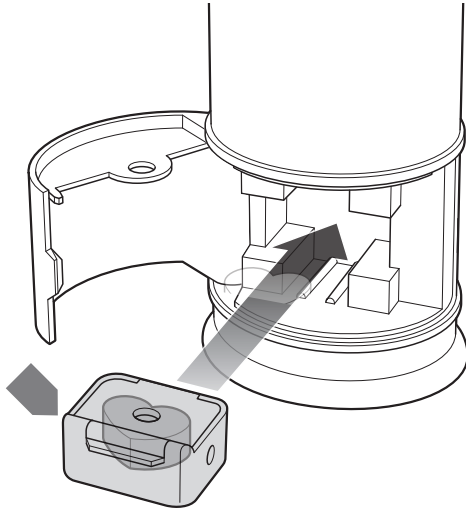
Close the STORAGE BOX cover.

5

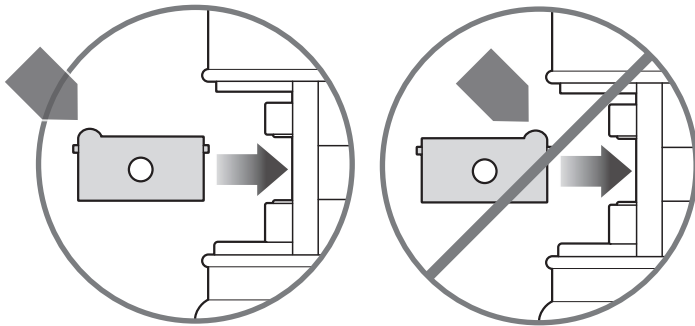


Open the CORING UNIT safety door.

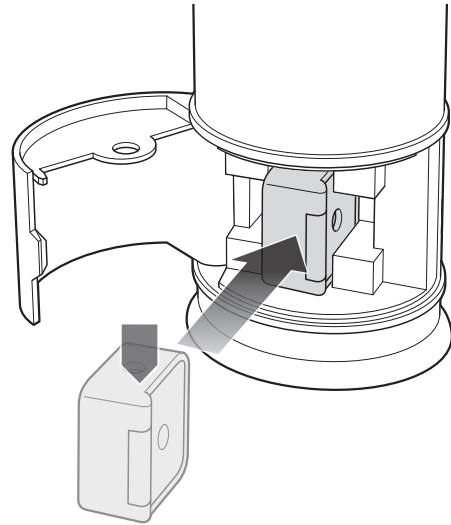
6



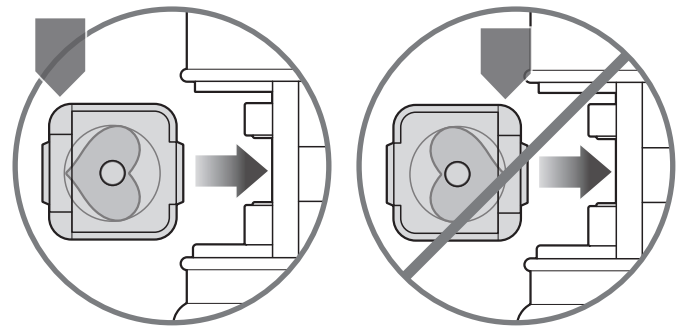
Insert the box horizontally into the CORING UNIT for a centre core.



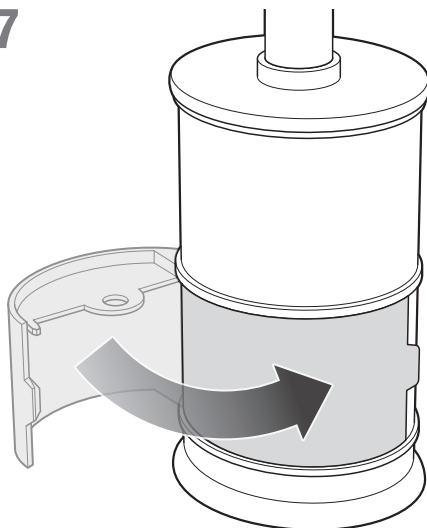
OR



Insert the box vertically into the CORING UNIT for a lengthwise core.



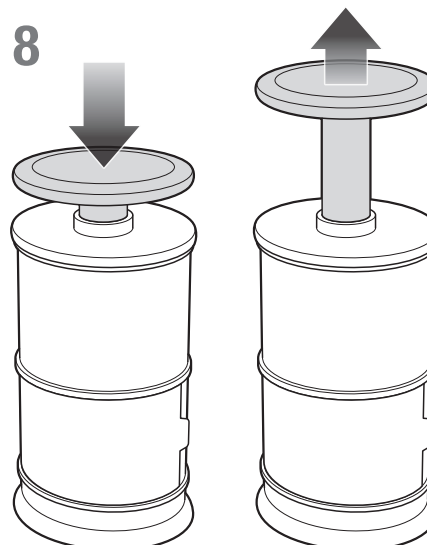
7



NOTE: The CORING UNIT will not operate unless the SAFETY DOOR is fully closed. Never open the SAFETY DOOR of the CORING UNIT during the coring process.

Close the CORING UNIT SAFETY DOOR.

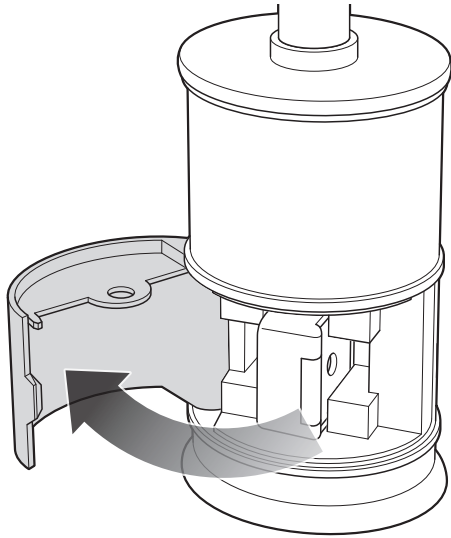
8



Press down firmly on the PLUNGER handle.

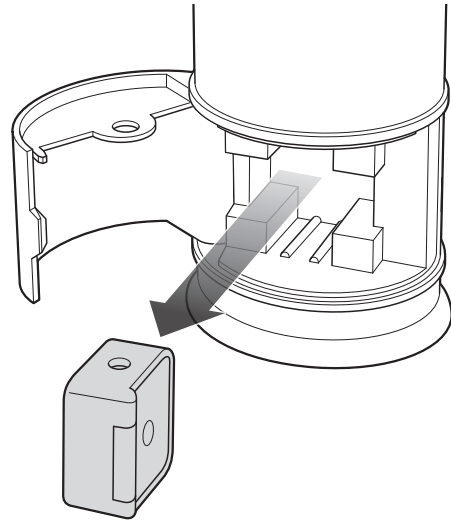
TIP: For LARGE STIX, pull the handle up and press down a second time to ensure complete coring.

9



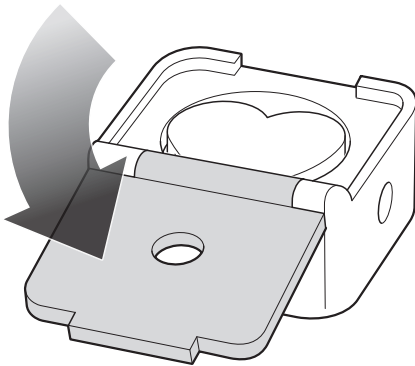
Open the CORING UNIT SAFETY DOOR.

10



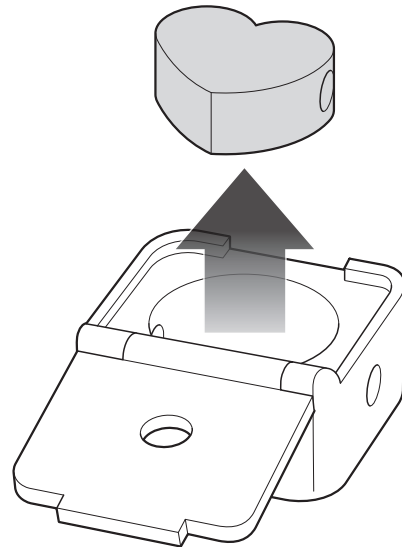
Removed the STORAGE BOX from the CORING UNIT.

11



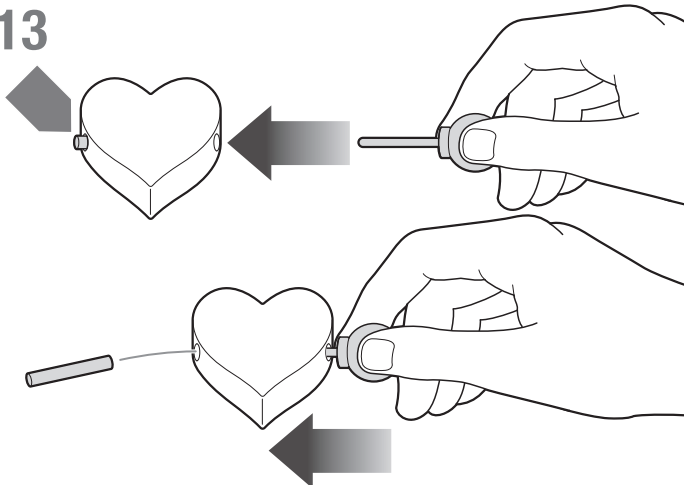
Open the STORAGE BOX cover.

12



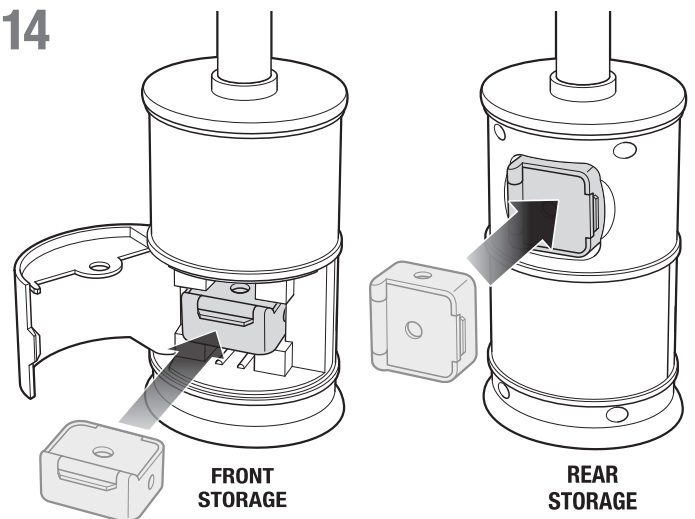
Remove the cored STIX.

13



Use the PUSH ROD (or fingers) to remove the left over cored material.

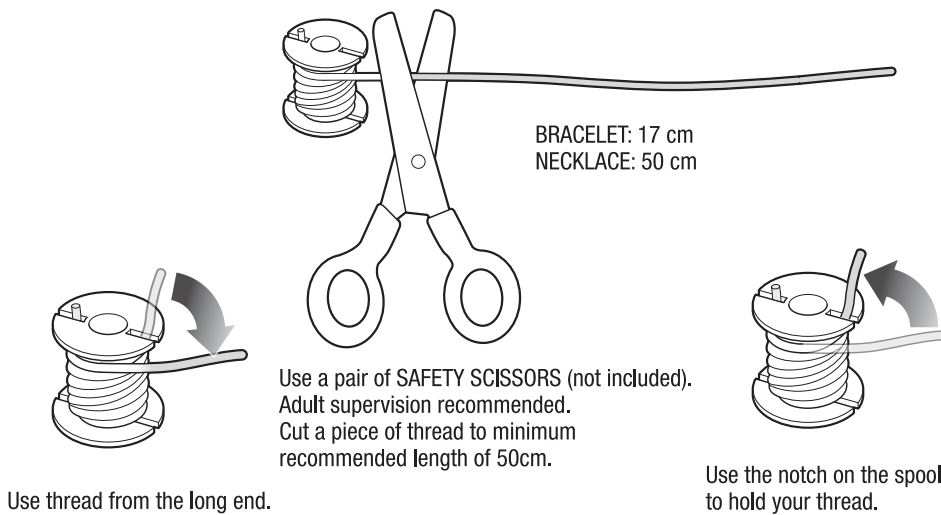
14



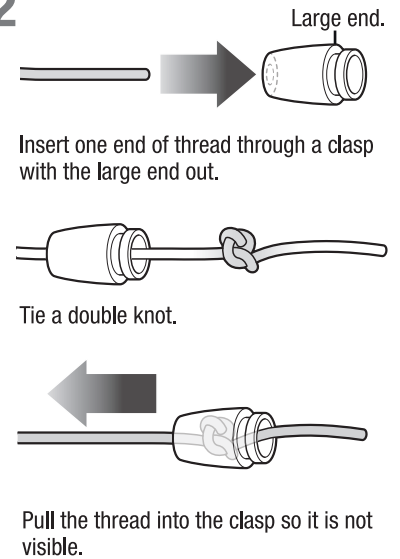
If you have finished coring - the STORAGE BOXES can be safely stored inside.

ASSEMBLING BRACELETS AND NECKLACES

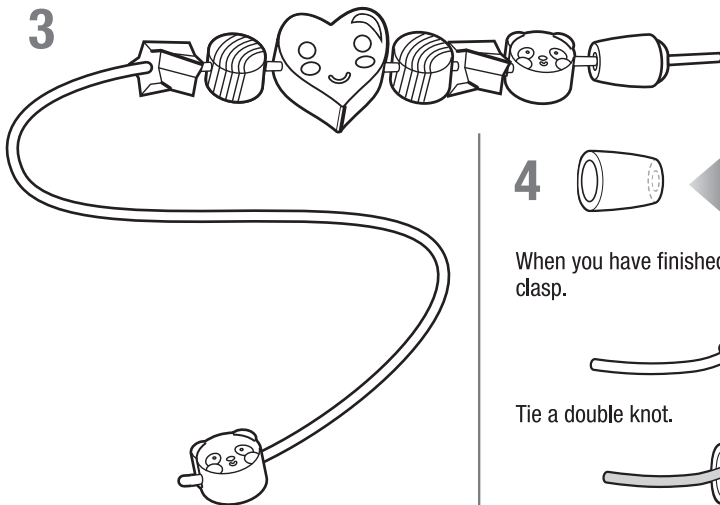
1



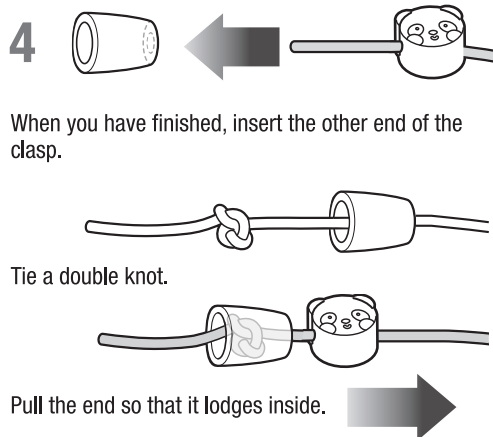
2



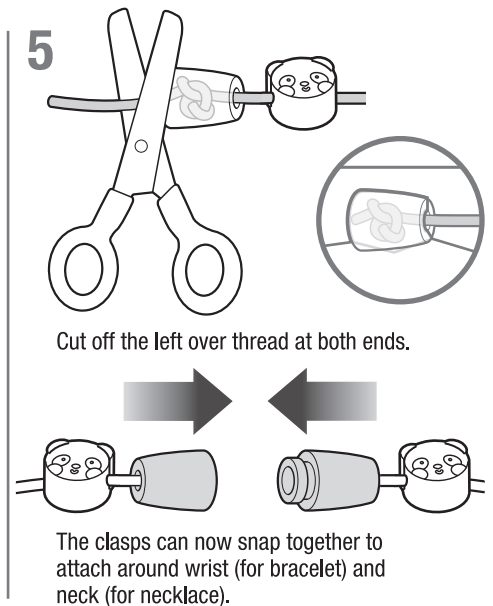
3



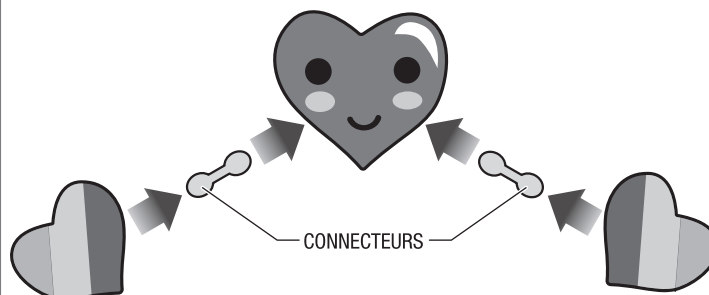
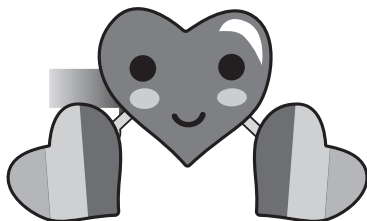
4



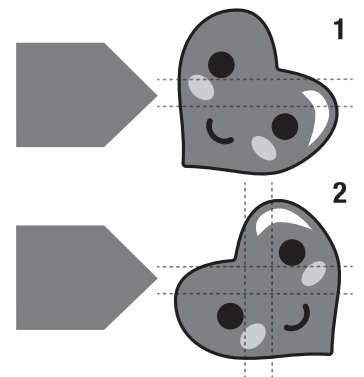
5



ASSEMBLY COMBINATIONS



Once the STIX have been cored inside - attach them to each other using the small connectors.



NOTE: To be able to combine shapes which are positioned in opposite directions..