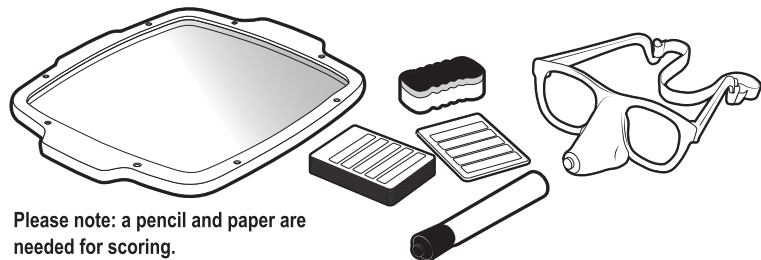


Pencil Nose™

contents:

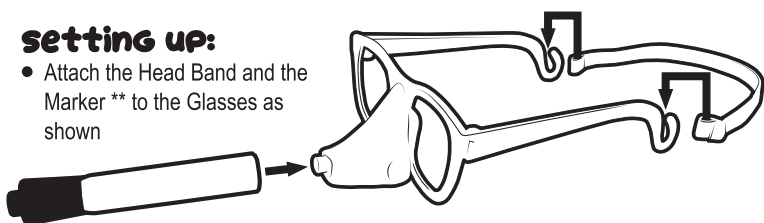


Please note: a pencil and paper are needed for scoring.

- 1 Pencil Nose Drawing Board
- 1 Pair of Pencil Nose Glasses, with elastic Head Band
- 1 Pencil Nose Marker (+ adapter)
- 45 Object Cards
- 1 Eraser

setting up:

- Attach the Head Band and the Marker ** to the Glasses as shown



** (if the marker supplied runs out of ink, you can use your own marker, which must be dry wipe type, but you may need to use the adapter we have also included).

- Each player takes 1 Object Card and keeps it a secret from the other players.
- Decide whether you are playing the blue side or the red side.
- The first player gets ready by taking the Pencil Nose Drawing Board and putting on the Pencil Nose Glasses.

object:

To draw the objects listed on your card... **with your nose!**



HOW TO PLAY:

- The youngest player takes the first turn.
- On your turn, place your Object Card in the slot at the top of the Drawing Board so only you can see the side you will be drawing from.
- Hold the Drawing Board in front of your face and using your Pencil Nose, draw the first object listed on the card. All the other players should race to be the first to guess what is being drawn. Words and numbers are not allowed unless they appear on the object you are drawing. For example, if you are drawing a clock, drawing the numbers 1 to 12 on its face would be allowed.
- Continue drawing until your object is guessed correctly by one of the other players, or until the turn taker or all guessers say they give up.
- During your turn, you may choose to erase and start over if you wish.
- The player who correctly guessed the object is awarded 1 point. The turn taker is also awarded 1 point (use a pencil and paper to keep score).
- The turn taker erases the Drawing Board and moves on to draw the second object on their card.
- This continues until all 5 words on the turn taker's card have been drawn.
- Play then passes to the left and that player wears the Pencil Nose and starts drawing using their Object Card.
- Continue until each player has taken a turn drawing all the objects on their card.

the winner:

- The player with the most points at the end of the game is the winner.

alternative GAME PLAY option:

- With more than 4 players, you can play in teams.
- Play exactly as described in the main game but set a timer on your phone for 60 seconds. Teams take turns to draw the items listed on their Object Card, but the other players in their team have the length of the timer to guess as many from the list as they can.
- The team scores 1 point for each correct guess.
- Play now passes to the other team.
- The winner is the team with the most correctly guessed objects after an agreed number of rounds (cards).

© 2019 by Wendy L. Harris, Garrett J. Donner, and Michael S. Steer

© 2020 John Adams Leisure Ltd. IDEAL® is a registered trademark of John Adams Leisure Ltd.

John Adams Leisure Ltd., Hercules House, Pierson Road, Enterprise Campus, Alconbury Weald, Huntingdon, Cambridgeshire. PE28 4YA.

For customer services call 01480 414361 or email customerservices@johnadams.co.uk

Please retain this information for reference. MADE IN CHINA.

To see more of our range visit www.idealboardgames.co.uk

WARNING! Not suitable for children under 36 months.
Choking hazard – contains small parts.

