

Othello®

A Minute to Learn... A Lifetime to Master!™

NO LOSE PIECES INSTRUCTIONS

CONTENTS:

- Game Board including 64 revolving playing pieces

OBJECT OF THE GAME:

The object of the game is to have the highest number of your colour discs on the board at the end of the game.

STARTING THE GAME:

Each player chooses one colour to use throughout the game.

Black rotates two black discs and white rotates two white discs as shown in figure 1. The game always begins with this set-up.

A move consists of "outflanking" your opponent's disc(s), then rotating the outflanked disc(s) to your colour.

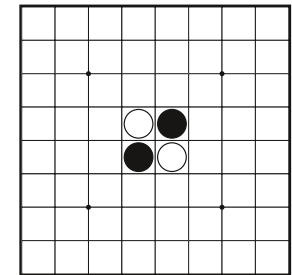


Figure 1.

To outflank means to place a disc on the board so that your opponent's row (or rows) of disc(s) is bordered at each end by a disc of your colour. (A "row" is defined as one or more discs in a continuous straight line – vertical, horizontal or diagonal).



Othello® and A Minute to Learn... A Lifetime to Master!™ are Registered Trademarks.
Licensed Exclusively by Anjar Co. All Rights Reserved.

IDEAL® is a registered trademark of John Adams Leisure Ltd.
John Adams Leisure Ltd., Marketing House, Blackstone Road, Huntingdon, Cambs. PE29 6EF.

Tel: 01480 414361 Email: sales@johnadams.co.uk

© 2014 John Adams Leisure Ltd. John Adams Leisure Ltd are constantly endeavouring to improve quality standards and therefore colours, sizes and contents may sometimes vary from those shown. Please retain our address for information.
Made in China.

WARNING! Not suitable for children under 36 months – small parts.
To see more of our range, why not visit us at www.idealboardgames.co.uk

HOW TO PLAY:

1. Black always moves first.
2. If on your turn you cannot outflank and rotate at least one opposing disc, you miss your turn and your opponent moves again. However, if a move is available to you, you must place a disc.
3. A disc may outflank any number of discs in one or more rows in any number of directions at the same time. See figures 2 and 3.

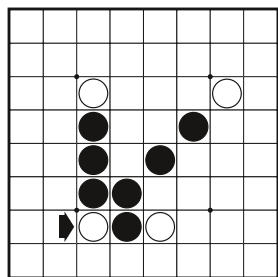


Figure 2.
White disc placed here

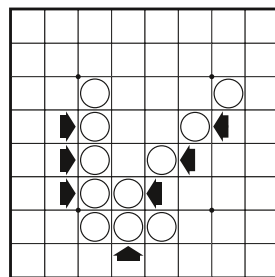


Figure 3.
These 7 discs rotate
to white

4. You may not skip your own colour disc to outflank an opposing disc. (See Figure 4) This disc only outflanks and rotates white disc 1.

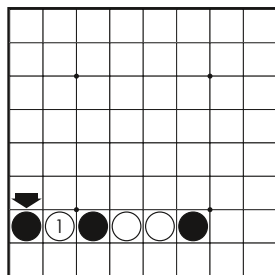


Figure 4.

5. Disc(s) may only be outflanked as a direct result of a move and must fall in the direct line of the disc placed down. (See Figures 5 & 6).

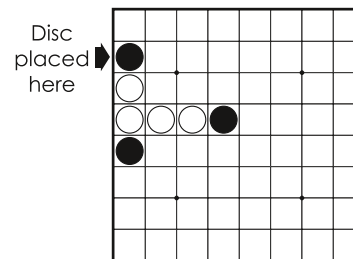


Figure 5.

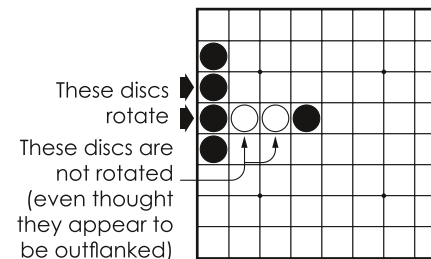


Figure 6.

6. All discs outflanked in any one move must be rotated, even if it is to the player's advantage not to rotate them all.
7. A player who rotates a disc which should not have been turned may correct the mistake as long as the opponent has not made a subsequent move. If the opponent has already moved, it is too late for change and the disc(s) remain as it is.

ENDING THE GAME:

When it is no longer possible for either player to move, the game is over. Discs are counted and the player with the majority of his or her colour discs on the board is the winner.

NOTE: It is possible for a game to end before all 64 squares are filled.

SCORING:

Players wishing to score their games may do so by determining the margin by which a player won a game. Simply subtract the smaller number of discs from the larger.

Players may also set up their own method of scoring for example, establishing a pre-determined number of games or points to win by in a series of games.