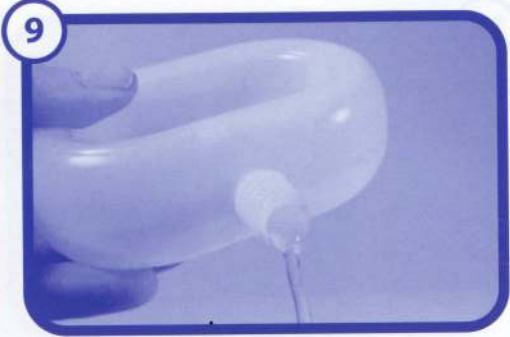


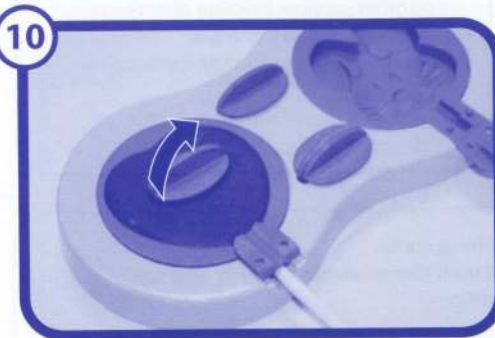
7 Carefully place each mould onto a flat surface in the freezer. Leave them to set for 20-30 mins, or if using the refrigerator leave to set for approx 40 mins.



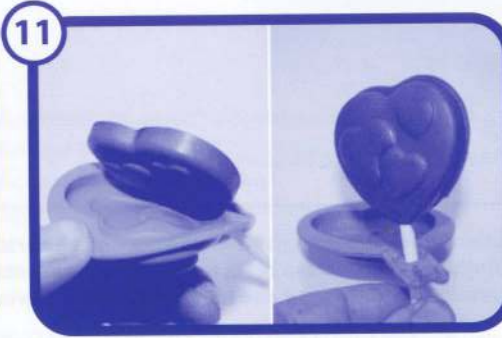
8 After 5-10 minutes the chocolate should have started to set enough to add a message mould if you wish, simply choose a message and push lightly into the back of the lolly, leave to set for the remaining period.



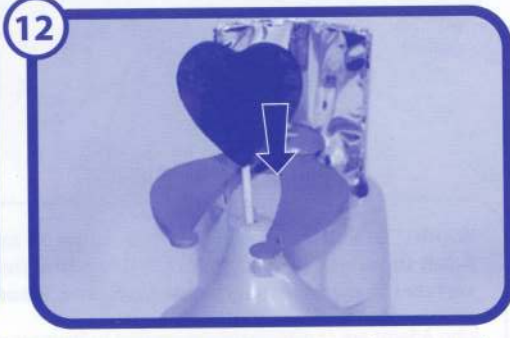
9 Ask an adult to empty the water from the melting unit and wash the unit. Remember to ask an adult to refill it again with warm water if you are going to make another lolly. You can now fill the remaining moulds with chocolate whilst the first are setting.



10 Once the chocolate has set, remove from fridge, pull up one end of the message mould and peel away from the chocolate surface, fold back the end of the mould.



11 Peel away the lolly mould being careful not to damage the edges, then slide down the lolly stick to free the mould from the lolly.



12 Now you can wrap your lolly, open the arms and insert the lolly into the central hole and push down.

13



Place a silver bag over the lolly and close the arms.

14

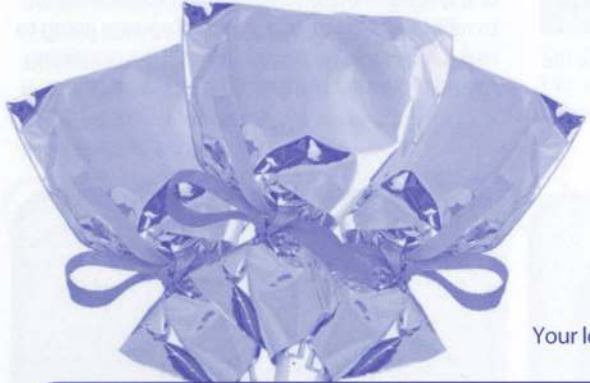


Turn the wheel at the base 2 or 3 times.

15



Cut a piece of ribbon, pass it around the lolly just above the arms, tie a knot then a bow.



Your lolly is ready to be given or eaten!

If you need any help or advice about any John Adams product, please contact our customer services helpline directly on Tel: **01480 414361** or email **customerservices@johnadams.co.uk**

WARNING! Not suitable for children under 36 months. Choking & strangulation hazard – small parts & long cords. Adult supervision recommended. Use protective clothing. Always clean parts which come into contact with chocolate thoroughly and work surfaces to maintain a hygienic work area. Please retain all information and read instructions thoroughly.

John Adams are constantly endeavouring to improve quality standards and therefore colours, sizes and contents may sometimes vary from those shown. Please retain this information.
John Adams Leisure Ltd., Marketing House, Blackstone Road, Huntingdon, Cambs, PE29 6EF, UK.
Made in China. Packaging and leaflets are printed on recycled materials wherever possible.
©2011 John Adams Leisure Ltd.

4890J7730001

To see more of our range why not visit www.johnadams.co.uk

REF: 9445 1105
Copyright © 2011 John Adams Leisure Ltd